

Galvanometers

Sunny Technology offers a selection of galvo-scanners to professional system integrators who desire to assemble their own scanning systems.

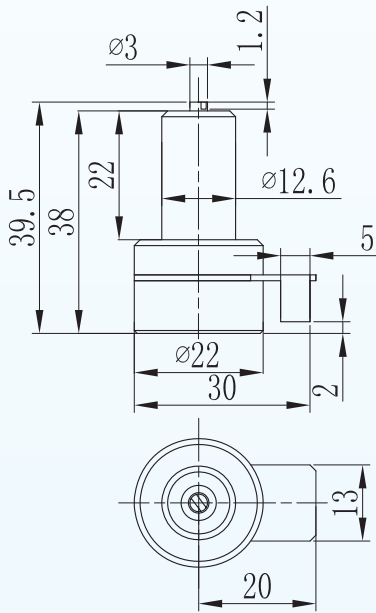
We offer two basic series of galvo-scanners, TSH8*** and new-generation S-9***. You can select your galvo by aperture size, speed and accuracy parameters, as well as the price range.

Model	2 Generation Series TSH8***			3 Generation Series S-9***			
	TSH8203	TSH8310	TSH8720	S-8107	S-9210	S-9320	S-9650
Aperture size(mm)	3, 5, 7	10	16, 20	3, 5, 7	10,12	15,20	30, 40
Max. scan angle	± 20°	± 20°	± 20°	± 12.5°	± 12.5°	± 12.5°	± 12.5°
Small step response time ⁽¹⁾ (ms)	0.25	0.31	0.7	0.15	0.22	0.4	0.6
Tracking error (ms)	0.13	0.15	0.4	0.1	0.12	0.22	0.33
Rotor Inertia, g*cm ² , ±10%	0.022	0.22	1.8	0.025	0.25	1.9	7.2
Torque constant, dyne·cm/amp, ±10%	0.25*10 ⁵	0.55*10 ⁵	1.5*10 ⁵	0.3*10 ⁵	0.7*10 ⁵	1.9*10 ⁵	3.9*10 ⁵
Max. RMS current (A/axis)	2	3	4	2	2.5	4	5
Peak current (A)	10	20	25	10	15	20	30
Zero drift (µRad./°C)	<20	<20	<20	<15	<15	<15	<15
Scale drift (ppm/°C)	<75	<75	<75	<50	<50	<50	<50
Linearity ⁽²⁾	≥99.70%	≥99.90%	≥99.90%	≥99.90%	≥99.90%	≥99.90%	≥99.90%
Repeatability (µRad.)	<8	<8	<8	<8	<8	<8	<8
Long-term drift over 8 hours (mrad.)	<0.8	<0.8	<0.8	<0.6	<0.5	<0.5	<0.5
Operating temperature	25°C ±10°C						
Weight (without cables) (g)	40	95	210	50	125	235	780

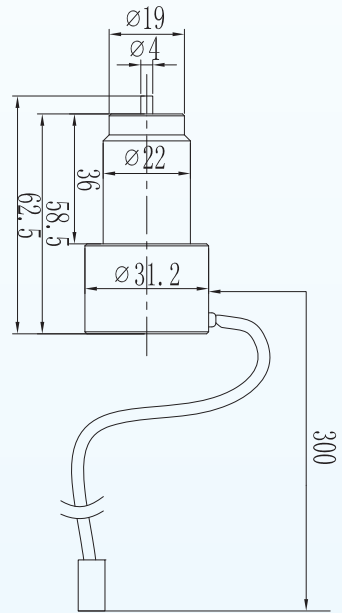
- All angles are in mechanical degrees.
- All above specifications are applicable after 60 sec warm-up.

(1) Settling to 1% of full scale with Min. Y mirror which the scanner can carry.
(2) Within ±20° optical angle.

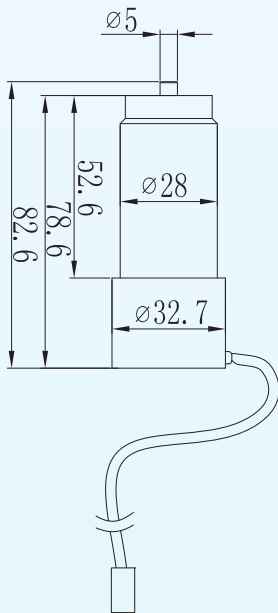
※ オプトマックスではTSHシリーズは現在取り扱っておりません



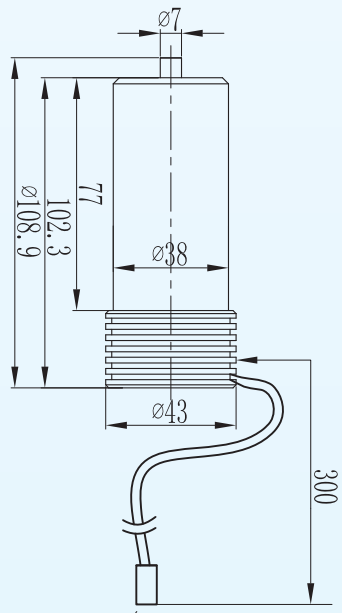
S-8107



S-9210



S-9320



S-9650